

SEMI-ANNUAL REPORT FOR INDUSTRIAL USERS REGULATED BY 40CFR433

Use of this form is not an EPA/ADEQ requirement.

Attn: Water Div/NPDES Pretreatment

(1) IDENTIFYING INFORMATION

A. LEGAL NAME & MAILING ADDRESS

DENVER EZELL
347 VAN BUREN
CAMDEN, AR 71701

B. FACILITY & LOCATION ADDRESS

BEM PAINTING
347 VAN BUREN
CAMDEN, AR 71701

C. FACILITY CONTACT: DENVER EZELL TELEPHONE NUMBER: (870) 836-3388 e-mail: dezell@bmpaint.com

(2) REPORTING PERIOD—FISCAL YEAR From Jun 1 to May 31 (Both Semi-Annual Reports must cover Fiscal Year)

A. MONTHS WHICH REPORTS ARE DUE

June & December

B. PERIOD COVERED BY THIS REPORT

FROM: JULY 08 TO: DEC 08

(3) DESCRIPTION OF OPERATION

A. REGULATED PROCESSES

CORE PROCESS(ES)

CHECK EACH APPLICABLE BLOCK

- G Electroplating
- G Electroless Plating
- Anodizing
- Coating
- G Chemical Etching and Milling
- G Printed Circuit Board Manufacture

ANCILLARY PROCESS(ES)*

LIST BELOW EACH PROCESS USED IN THE FACILITY

CR ANODIZING
CHEMICAL CONVERSION COATING
PENETRANT TESTING
PAINTING

B. CHANGES:

SUMMARIZE ANY CHANGES IN THE REGULATED PROCESSES SINCE THE LAST REPORT. ATTACH AN ADDITIONAL SHEET IF THE SPACE BELOW IS INADEQUATE. PROVIDE A NEW SCHEMATIC IF APPROPRIATE.

Waste Water Ion Exchange (WWIX) system Has been added at Outfall #1 and Outfall #2 for chrome reduction/removal. BMP does internal chrome testing at WWIX System locations 2 - 3 times per week to Ensure constant compliance and to not Exceed daily or monthly-average limits On metals to POTW.

*SEE 40CFR433.10(a) FOR 40 DIFFERENT OPERATIONS

C. Number of Regular Employees at this Facility

46

D. [Reserved]

(A) FLOW MEASUREMENT

INDIVIDUAL & TOTAL PROCESS FLOWS DISCHARGED TO POTW IN GALLONS PER DAY

Process	Average	Maximum	Type of Discharge
Regulated (Core & Anc)	260 gal.	300 gal.	DI RINSE WATER
Regulated (Cyanide)			
'403.6(e) Unregulated*			
'403.6(e) Dilute			
Cooling Water			
Sanitary	200 gal.	200 gal.	
Total Flow to POTW	460 gal.	500 gal.	*****

*"Unregulated" has a precise legal meaning; see 40CFR403.6(e).

(C) MEASUREMENT OF POLLUTANTS

A. TYPE OF TREATMENT SYSTEM
CHECK EACH APPLICABLE BLOCK

- Neutralization
- Chemical Precipitation and Sedimentation
- Chromium Reduction
- Cyanide Destruction
- Other WWIX
- None

B. COMMENTS ON TREATMENT SYSTEM

C. THE INDUSTRIAL USER MUST PERFORM SAMPLING AND ANALYSIS OF THE EFFLUENT FROM ALL REGULATED PROCESSES--CORE & ANCILLARY--(AFTER TREATMENT, IF APPLICABLE). ATTACH THE LAB ANALYSIS WHICH SHOWS A MAXIMUM; TABULATE ALL THE ANALYTICAL DATA COLLECTED DURING THE REPORT PERIOD IN THE SPACE PROVIDED BELOW. ZERO CONCENTRATIONS ARE NOT ACCEPTABLE; LIST THE DETECTION LIMIT IF CONCENTRATION WAS BELOW DETECTION LIMIT.

Pollutant(mg/l)	Cd	Cr	Cu	Pb	Ni	Ag	Zn	CN	TTO*
Max for 1 day	0.11	2.77	3.38	0.69	3.98	0.43	2.61	1.20	2.13
Monthly Ave	0.07	1.71	2.07	0.43	2.38	0.24	1.48	0.65	--
Max Measured	0.004	0.079	0.012	0.04	0.01	0.007	0.018	0.024	
Ave Measured	0.004	0.079	0.012	0.04	0.01	0.007	0.018	0.024	

Sample Location POTW OUTFALL #1 & #2
 Sample Type (Grab or Composite) COMPOSITE
 Number of Samples and Frequency Collected 8 TOTAL (EVERY 3-4 HRS.)
 40CFR136 Preservation and Analytical Methods Use: Yes No

(6) CERTIFICATION

A. [Reserved]

[Reserved]

B. CHECK ONE: '433.11(e) TOXIC ORGANIC ANALYSIS ATTACHED '433.12(a) TTO CERTIFICATION

Based on my inquiry of the person or persons directly responsible for managing compliance with the pretreatment standard for total toxic organics (TTO), I certify that, to the best of my knowledge and belief, no dumping of concentrated toxic organics into the wastewaters has occurred since filing of the last semi-annual compliance report. I further certify that this facility is implementing the toxic organic management plan submitted to Arkansas Department of Environmental Quality.

DEANER EZELL
(Typed Name)

DEANER EZELL
(Corporate Officer or authorized representative)

Date of Signature 9-8-09

CORPORATE ACKNOWLEDGEMENT (Optional)

STATE OF ARKANSAS)
COUNTY OF _____)

Before me, the undersigned authority, on this day personally appeared _____ of _____, a corporation, known to me to be the person whose name is subscribed to the foregoing instrument(s), and acknowledged to me that he executed the same for purposes and considerations therein expressed, in the capacity therein stated and as the act and deed of said corporation.

Given under my hand and seal of office on this _____ day of _____, 200__.

Notary Public in and for _____
County, Arkansas

My commission expires _____.

B. Signatory Requirement [40 CFR 403.12(I)]

40 CFR 403.12(I)(3) Authorization to Sign Environmental Reports

I hereby authorize persons filling the position title of CHEMICAL MANAGER, responsible for the overall operation of the BMP LAB facility in CAMDEN, Arkansas, to sign all regular reports required by National Pretreatment Standards--pursuant to ADEQ rules and/or Clean Water Act (CWA) regulations. This written authorization is provided in accordance with 40 CFR 403.12(I) and comparable state regulations.

BRIAN McCASLAND (VICE PRESIDENT)
Corporate official name & title here

Brian McCasland
Signature

9-8-2009
Date

B & M Painting

(7) POLLUTION PREVENTION ACT OF 1990 [42 U.S.C. 13101 et seq.]

*6602 [42 U.S.C. 13101] Findings and Policy para (b) Policy.--The Congress hereby declares it to be the national policy of the United States that pollution should be prevented or reduced at the source whenever feasible; pollution that cannot be prevented should be recycled in an environmentally safe manner, whenever feasible; pollution that cannot be prevented or recycled should be treated in an environmentally safe manner whenever feasible; and disposal or other release into the environment should be employed only as a last resort and should be conducted in an environmentally safe manner.

The User may list any new or ongoing Pollution Prevention practices:

WASTE WATER ION EXCHANGE

(8) GENERAL COMMENTS

(9) SIGNATORY REQUIREMENTS [40CFR403.12(l)]

I certify under penalty of law that I have personally examined and am familiar with the information in this document and all attachments were prepared under my direction or supervision in accordance with a system designed to assure that qualified personnel properly gather and evaluate the information submitted. Based on my inquiry of the person or persons who manage the system, or those persons directly responsible for gathering the information, the information submitted is, to the best of my knowledge and belief, true, accurate, and complete. I am aware that there are significant penalties for submitting false information, including the possibility of fine and imprisonment for knowing violations.

BRIAN MCCASLAND
NAME OF CORPORATE OFFICER OR AUTHORIZED REPRESENTATIVE

Brian McCasland
SIGNATURE

VICE PRESIDENT
OFFICIAL TITLE

9-8-09
DATE SIGNED

Appendix A

TOTAL TOXIC ORGANICS LIST

Volatiles (EPA Method 624)	Base/Neutrals (EPA Method 625)	
1. Acrolein	39. 2,4,6-trichlorophenol	77. Isophorone
2. Acrylonitrile	40. Acenaphthene	78. Naphthalene
3. Benzene	41. Acenaphthylene	79. Nitrobenzene
4. Bromoform	42. Anthracene	80. N-nitrosodimethylamine
5. Carbon tetrachloride	43. Benzidine	81. N-nitrosodi-n-propylamine
6. Chlorobenzene	44. Benzo(a)anthracene	82. N-nitrosodiphenylamine
7. Chlorodibromomethane	45. Benzo(a)pyrene	83. Phenanthrene
8. Chloroethane	46. 3,4-benzofluoranthene	84. Pyrene
9. 2-chloroethylvinyl ether	47. Benzo(ghi)perylene	85. 1,2,4-trichlorobenzene
10. Chloroform	48. Benzo(k)fluoranthene	Pesticides (EPA Method 608)
11. Dichlorobromomethane	49. bis(2-chloroethoxy)methane	86. Aldrin
12. 1,1-dichloroethane	50. bis(s-chloroethyl)ether	87. Alpha-BHC
13. 1,2-dichloroethane	51. bis(2-chloroisopropyl)ether	88. Beta-BHC
14. 1,1-dichloroethylene	52. bis(2-ethylhexyl)phthalate	89. Gamma-BHC
15. 1,2-dichloropropane	53. 4-bromophenyl phenyl ether	90. Delta-BHC
16. 1,3-dichloropropylene	54. Butylbenzyl phthalate	91. Chlordane
17. Ethylbenzene	55. 2-chloronaphthalene	92. 4,4'-DDT
18. Methyl bromide	56. 4-chlorophenyl phenyl ether	93. 4,4'-DDE
19. Methyl chloride	57. Chrysene	94. 4,4'-DDD
20. Methylene chloride	58. Dibenzo(a,h)anthracene	95. Dieldrin
21. 1,1,2,2-tetrachloroethane	59. 1,2-dichlorobenzene	96. Alpha-endosulfan
22. Tetrachloroethylene	60. 1,3-dichlorobenzene	97. Beta-endosulfan
23. Toluene	61. 1,4-dichlorobenzene	98. Endosulfan sulfate
24. 1,2-trans-dichloroethylene	62. 3,3-dichlorobenzidine	99. Endrin
25. 1,1,1-trichloroethane	63. Diethyl phthalate	100. Endrin aldehyde
26. 1,1,2-trichloroethane	64. Dimethyl phthalate	101. Heptachlor
27. Trichloroethylene	65. Di-n-butyl phthalate	102. Heptachlor epoxide
28. Vinyl chloride	66. 2,4-dinitrotoluene	103. PCB-1242 (Arochlor 1242)
Acid compounds (EPA Method 625)	67. 2,6-dinitrotoluene	104. PCB-1254 (Arochlor 1254)
29. 2-chlorophenol	68. Di-n-octyl phthalate	105. PCB-1221 (Arochlor 1221)
30. 2,4-dichlorophenol	69. 1,2-diphenylhydrazine (as azobenzene)	106. PCB-1232 (Arochlor 1232)
31. 2,4-dimethylphenol	70. Fluoranthene	107. PCB-1248 (Arochlor 1248)
32. 4,6-dinitro-o-cresol	71. Fluorene	108. PCB-1260 (Arochlor 1260)
33. 2,4-dinitrophenol	72. Hexachlorobenzene	109. PCB-1016 (Arochlor 1016)
34. 2-nitrophenol	73. Hexachlorobutadiene	110. Toxaphene
35. 4-nitrophenol	74. Hexachlorocyclopentadiene	III. CYANIDE (N.O.S.)
36. p-chloro-m-cresol	75. Hexachloroethane	Total concentration of all quantifiable values greater than 10 micrograms for compounds 1 thru 110 shall not exceed 2,130 ug/l.
37. Pentachlorophenol	76. Indeno(1,2,3-cd)pyrene	
38. Phenol		

The list of Priority Pollutants included herein is taken from Federal NPDES Permit regulation 40 CFR Part 122, Appendix D, Table



B & M Painting Co., Inc.
347 Van Buren
Camden, AR 71701

ANALYTICAL RESULTS

AIC No. 131974-1

Sample Identification: B&M Painting 09-02-09 0730,1225,1400,1500 hrs

Analyte	Method	Result	RL	Units	Batch	Qualifier
Total Cyanide	SM4500-CN C,E	0.024	0.01	mg/l	W30103	
Cadmium	EPA 200.7	< 0.004	0.004	mg/l	S26312	
Chromium	EPA 200.7	0.079	0.007	mg/l	S26312	
Copper	EPA 200.7	0.012	0.006	mg/l	S26312	
Lead	EPA 200.7	< 0.04	0.04	mg/l	S26312	
Nickel	EPA 200.7	< 0.01	0.01	mg/l	S26312	
Silver	EPA 200.7	< 0.007	0.007	mg/l	S26312	
Zinc	EPA 200.7	0.018	0.002	mg/l	S26312	
Oil and Grease	EPA 1664A	< 5	5	mg/l	B5906	



B & M Painting Co., Inc.
347 Van Buren
Camden, AR 71701

SAMPLE PREPARATION REPORT

AIC No. 131974-1

<u>Analyte</u>	<u>Date/Time Prepared By</u>		<u>Date/Time Analyzed By</u>		<u>Dilution</u>	<u>Batch</u>	<u>Qualifier</u>
Total Cyanide	03SEP09 1108	291	03SEP09 1603	258		W30103	
Metals	03SEP09 1421	286	03SEP09 1742	270		S26312	
Oil and Grease	03SEP09 1130	100	03SEP09 1527	100		B5906	



B & M Painting Co., Inc.
347 Van Buren
Camden, AR 71701

LABORATORY CONTROL SAMPLE RESULTS

Analyte	Spike Amount	% Recovery	% Recovery Limits	RPD	RPD Limit	Batch	Qualifier
Cyanide	0.1 mg/l	96.8/98.3	85-115	1.54	20	W30103	
Cadmium	5 mg/l	99.2/99.0	85-115	0.173	20	S26312	
Chromium	0.5 mg/l	92.2/93.7	85-115	1.60	20	S26312	
Copper	0.5 mg/l	103/103	85-115	0.0241	20	S26312	
Lead	5 mg/l	103/102	85-115	1.00	20	S26312	
Nickel	0.5 mg/l	99.4/99.9	85-115	0.517	20	S26312	
Silver	0.1 mg/l	106/105	85-115	0.879	20	S26312	
Zinc	0.5 mg/l	98.0/97.6	85-115	0.400	20	S26312	
Oil and Grease	40 mg/l	95.2/96.5	78-114	1.30	20	B5906	

MATRIX SPIKE SAMPLE RESULTS

Analyte	Spike Amount	% Recovery	% Recovery Limits	RPD	RPD Limit	Batch	Qualifier
Cyanide	0.1 mg/l	95.2/103	75-125	7.91	20	W30103	
Cadmium	5 mg/l	102/97.6	75-125	4.11	20	S26312	
Chromium	0.5 mg/l	92.3/92.8	75-125	0.540	20	S26312	
Copper	0.5 mg/l	104/106	75-125	2.09	20	S26312	
Lead	5 mg/l	103/105	75-125	1.64	20	S26312	
Nickel	0.5 mg/l	98.8/100	75-125	1.46	20	S26312	
Silver	0.1 mg/l	102/105	75-125	2.66	20	S26312	
Zinc	0.5 mg/l	98.3/99.9	75-125	1.53	20	S26312	
Oil and Grease	40 mg/l	94.4	78-114	-	20	B5906	

LABORATORY BLANK RESULTS

Analyte	Method	Result	Units	RL	PQL	QC	
						Sample	Qual
Cyanide	SM4500-CN C,E	< 0.01	mg/l	0.01	0.01	W30103-1	
Cadmium	EPA 200.7	< 0.004	mg/l	0.004	0.004	S26312-1	
Chromium	EPA 200.7	< 0.007	mg/l	0.007	0.007	S26312-1	
Copper	EPA 200.7	< 0.006	mg/l	0.006	0.006	S26312-1	
Lead	EPA 200.7	< 0.04	mg/l	0.04	0.04	S26312-1	
Nickel	EPA 200.7	< 0.01	mg/l	0.01	0.01	S26312-1	
Silver	EPA 200.7	< 0.007	mg/l	0.007	0.007	S26312-1	
Zinc	EPA 200.7	< 0.002	mg/l	0.002	0.002	S26312-1	
Oil and Grease	EPA 1664A	< 5	mg/l	5	5	B5906-1	



B & M Painting Co., Inc.
347 Van Buren
Camden, AR 71701

QUALITY CONTROL PREPARATION REPORT

LABORATORY CONTROL SAMPLES

Analyte	Date/Time Prepared By		Date/Time Analyzed By		Dilution	QC Sample	Qualifier
Cyanide	03SEP09 1109	291	03SEP09 1554	258		W30103-2	
Cyanide	03SEP09 1109	291	03SEP09 1556	258		W30103-3	
Metals	03SEP09 1422	286	03SEP09 1731	270		S26312-2	
Metals	03SEP09 1422	286	03SEP09 1733	270		S26312-3	
Oil and Grease	03SEP09 1132	100	03SEP09 1527	100		B5906-2	
Oil and Grease	03SEP09 1132	100	03SEP09 1527	100		B5906-3	

MATRIX SPIKE SAMPLES

Analyte	Date/Time Prepared By		Date/Time Analyzed By		Dilution	QC Sample	Qualifier
Cyanide	03SEP09 1109	291	03SEP09 1600	258		W30103-4	
Cyanide	03SEP09 1109	291	03SEP09 1602	258		W30103-5	
Metals	03SEP09 1422	286	03SEP09 1736	270		S26312-4	
Metals	03SEP09 1422	286	03SEP09 1739	270		S26312-5	
Oil and Grease	03SEP09 1132	100	03SEP09 1527	100		B5906-4	

LABORATORY BLANKS

Analyte	Date/Time Prepared By		Date/Time Analyzed By		Dilution	QC Sample	Qualifier
Cyanide	03SEP09 1109	291	03SEP09 1552	258		W30103-1	
Metals	03SEP09 1422	286	03SEP09 1727	270		S26312-1	
Oil and Grease	03SEP09 1132	100	03SEP09 1527	100		B5906-1	



B & M Painting Co., Inc.
ATTN: Mr. Derek McCasland
347 Van Buren
Camden, AR 71701

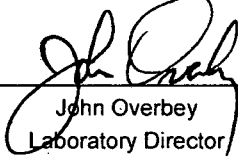
Dear Mr. Derek McCasland:

Project Description: One (1) water sample(s) received on September 3, 2009
Rinse Water
P.O. No. BM090209-DE

This report is the analytical results and supporting information for the sample submitted to American Interplex Corporation (AIC) on September 3, 2009. The following results are applicable only to the sample identified by the control number referenced above. Accurate assessment of the data requires access to the entire document. Each section of the report has been reviewed and approved by the laboratory director or a qualified designee.

Data has been validated using standard quality control measures performed on at least 10% of the samples analyzed. Quality Assurance, instrumentation, maintenance and calibration were performed in accordance with guidelines established by the cited methodology.

AMERICAN INTERPLEX CORPORATION

By  By KW
John Overbey
Laboratory Director

Enclosure(s): Chain of Custody

PDF cc: B & M Painting Co., Inc.
ATTN: Mr. Denver Ezell
dezell@bmpaint.com



B & M Painting Co., Inc.
347 Van Buren
Camden, AR 71701

CASE NARRATIVE

SAMPLE RECEIPT

Received Temperature: 2°C

Receipt Verification:	Complete Chain of Custody	Y
	Sample ID on Sample Labels	Y
	Date and Time on Sample Labels	Y
	Proper Sample Containers	Y
	Within Holding Times	Y
	Adequate Sample Volume	Y
	Sample Integrity	Y
	Proper Temperature	Y
	Proper Preservative	Y

COMMENTS

There were no qualifiers for this data and all samples met quality control criteria.

References:

"Methods for Chemical Analysis of Water and Wastes", EPA/600/4-79-020 (Mar 1983) with updates and supplements EPA/600/5-91-010 (Jun 1991), EPA/600/R-92-129 (Aug 1992) and EPA/600/R-93-100 (Aug 1993).

"Test Methods for Evaluating Solid Waste Physical/Chemical Methods (SW846)", Third Edition.

"Standard Methods for the Examination of Water and Wastewaters", 20th edition, 1998.

"American Society for Testing and Materials" (ASTM).

"Association of Analytical Chemists" (AOAC).

"Self-Davis and Moore" (2000).

TOXIC ORGANIC MANAGEMENT PLAN

B & M PAINTING COMPANY, INC.
347 VAN BUREN ST.
CAMDEN, AR 71701

Industrial User Discharge Permit Number: CWU001-2000

Emergency Contract Phone Numbers: Tracy Payne (870)231-5683
Brian McCasland (870)574-2799

2. Facility Description:

B & M Painting Co., Inc. (BMP) is a contract chemical coating/painting facility that processes parts for the U.S. Military and the aerospace industry. BMP has 2 chemical process lines where rinse-overflows discharge to one of two (2) POTW Outfalls. All hazardous material solutions are discharged to same 2 POTW Outfalls 'but' are routed through Waste Water Ion eXchange system prior to discharge. (WWIX) BMP has a daily employ of 44-46 employees and operates daily (Mon. – Fri.) from 7:00 a.m. to 4:30 p.m.

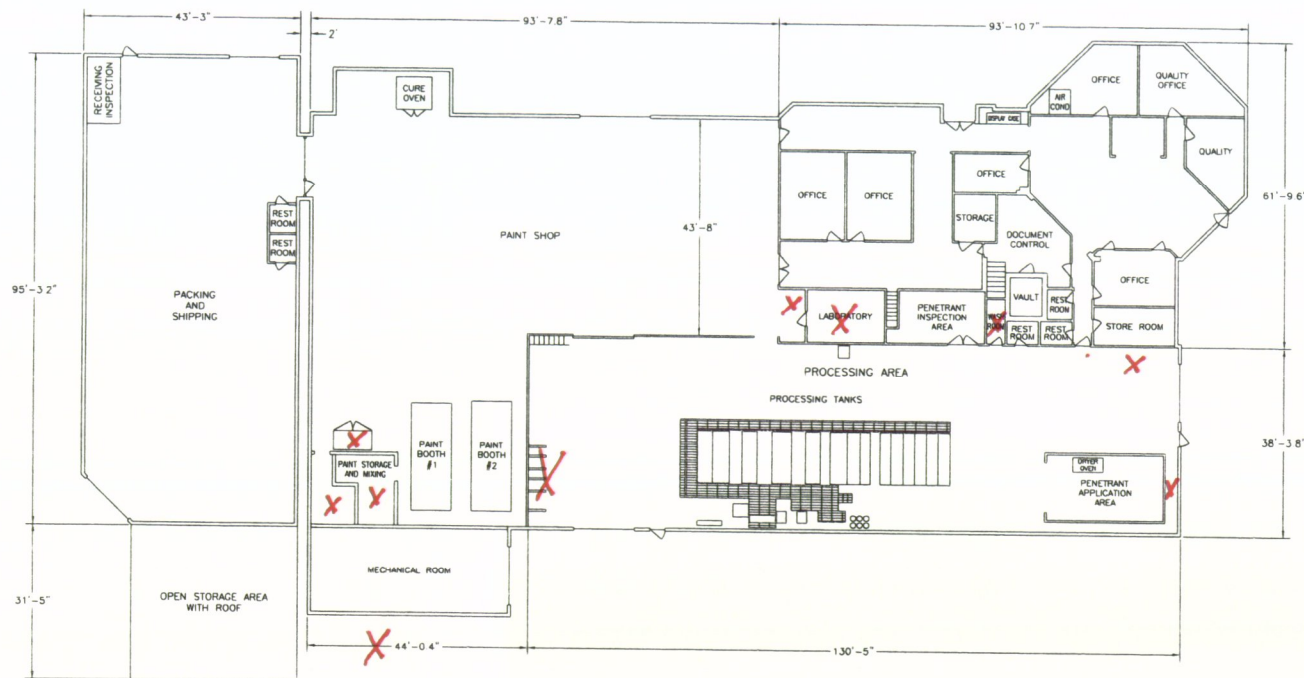
Facility Drawings for Pertinent Subject-Items:

Appendix to Drawings:

1. Location of all raw materials
2. Location of all chemicals
3. Location of all waste
4. Location of all floor drains
5. Location of all other discharge points
6. Location of all outside exits
7. Location of all posted notices of emergency contacts
8. Location of all stormwater drains.

Location of all raw materials. Indicated by a red X

Facility Drawing 1

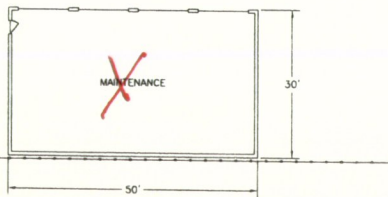


2	1	SHEET
-	-	REVISION

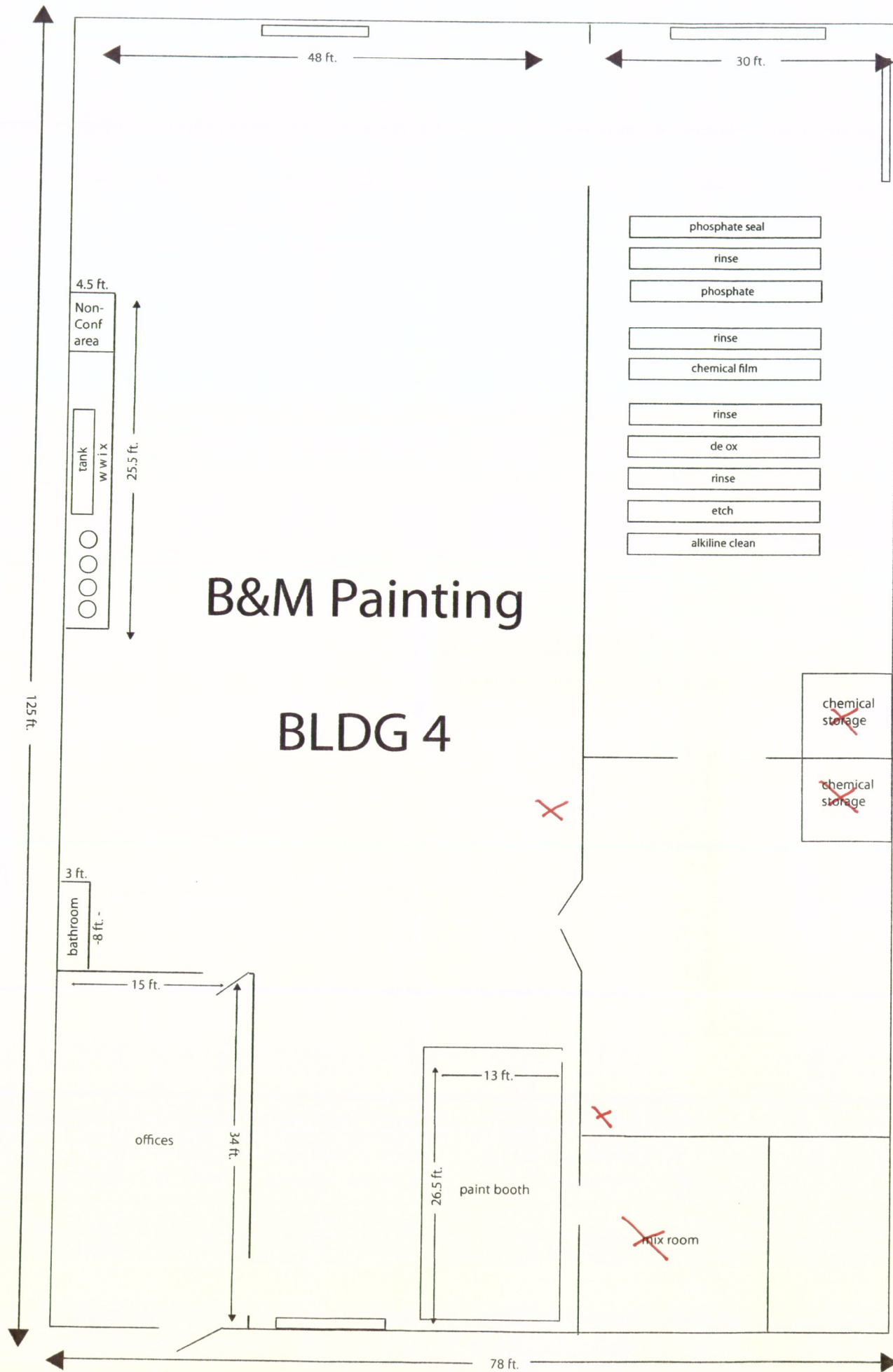
PACKING AND SHIPPING AREA - 3,897 SQ. FT.
 PROCESSING, PAINT SHOP, OFFICE, INSPECTION, AND QUALITY AREAS - 15,080 SQ. FT.

X

X

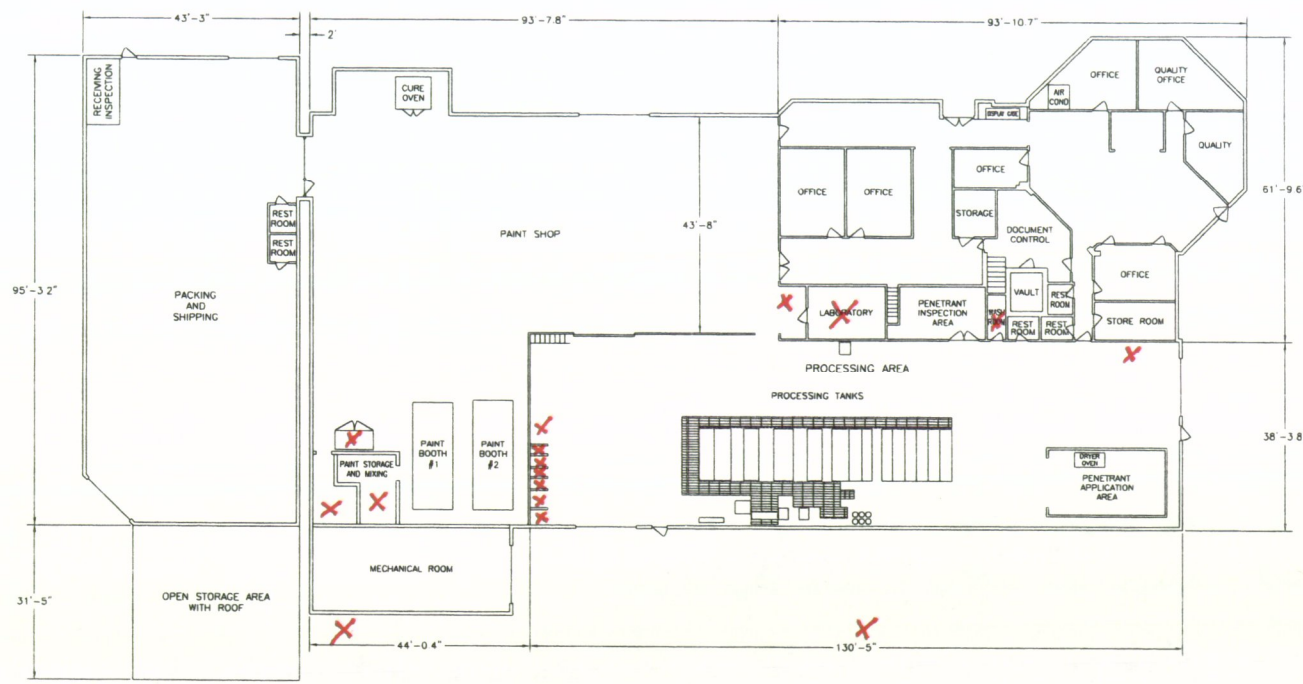


B & M PAINTING COMPANY CAMDEN, ARKANSAS			
B & M PAINTING FACILITY LAYOUT			
DESIGNED BY: KEVIN LEWIS/BSI	DATE: JAN 12, 2007	DWG NO: BM-07-1001	REV: -
SCALE: NONE	SHEET: 1 OF 2		



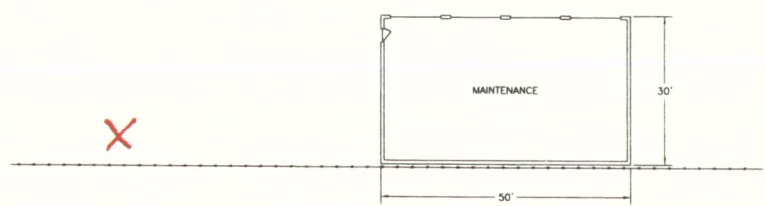
Location of all chemical inventories by **Red X**

Facility Drawing 2

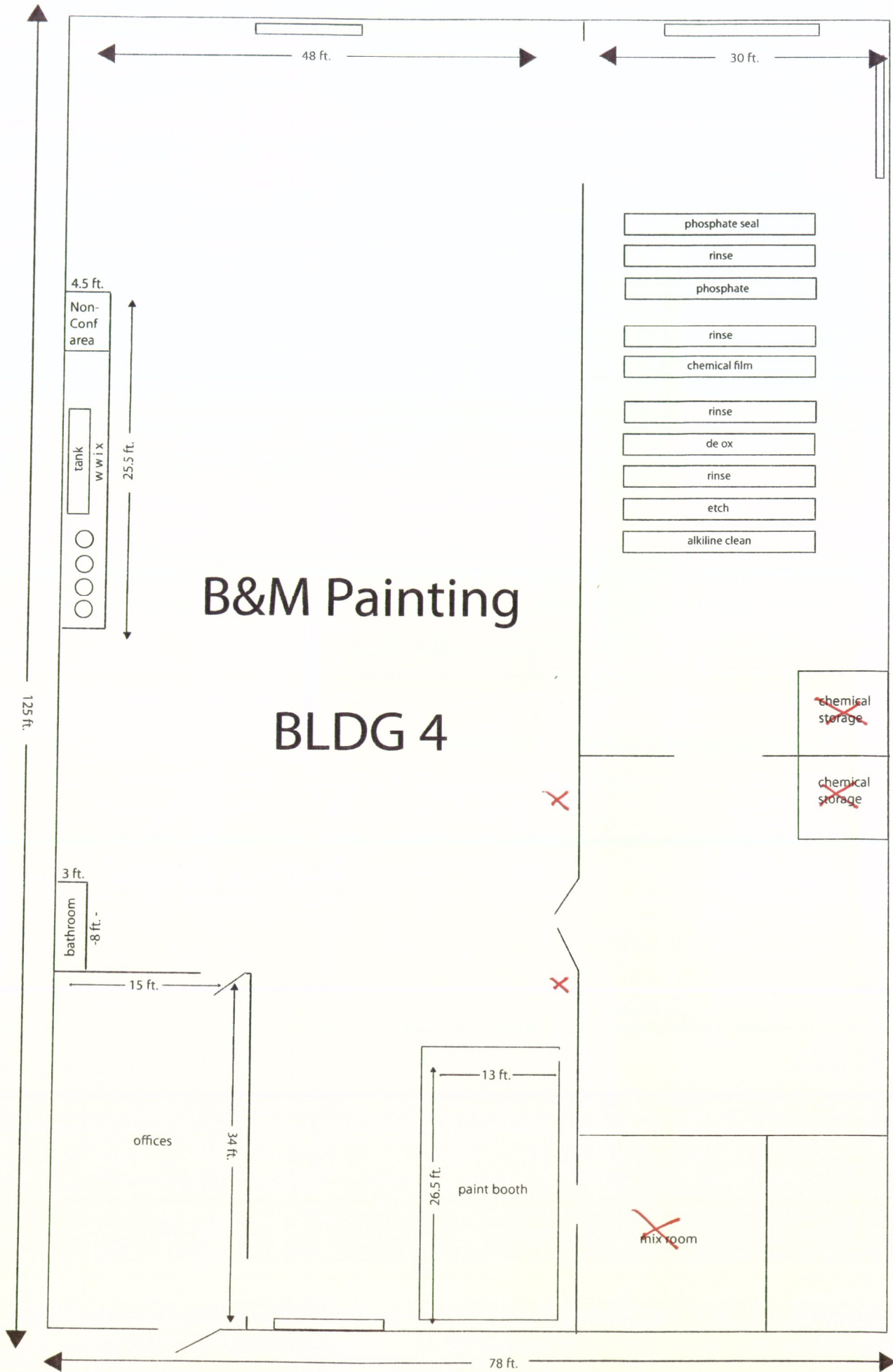


2	1	SHEET
-	-	REVISION

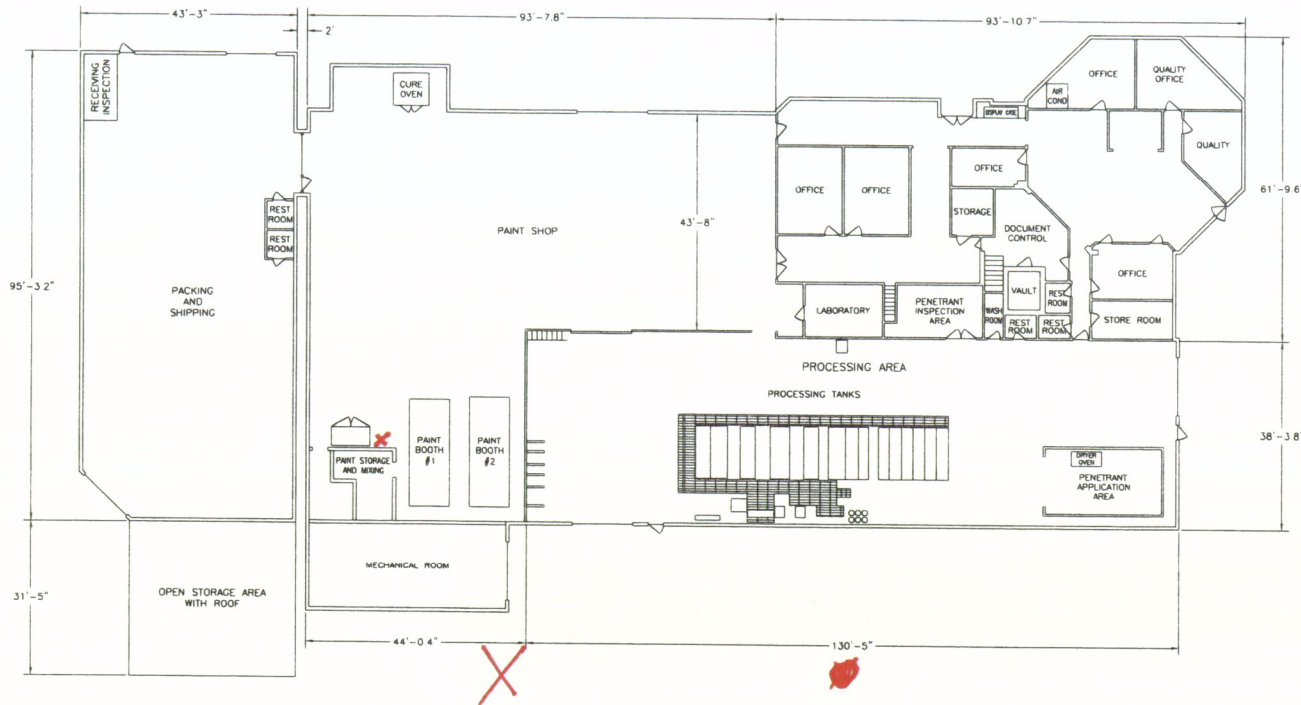
PACKING AND SHIPPING AREA - 3,897 SQ. FT.
 PROCESSING, PAINT SHOP, OFFICE,
 INSPECTION, AND QUALITY AREAS - 15,080 SQ. FT.



B & M PAINTING COMPANY CAMDEN, ARKANSAS			
B & M PAINTING FACILITY LAYOUT			
DATE DRAWN BY: KEH LEISERICH JAN 12, 2007	SCALE AS SHOWN	DWG NO. BM-07-1001	REV -
SCALE: NONE		SHEET: 1 OF 2	

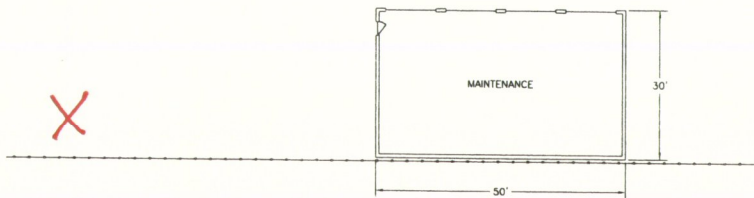


Facility Drawing 3

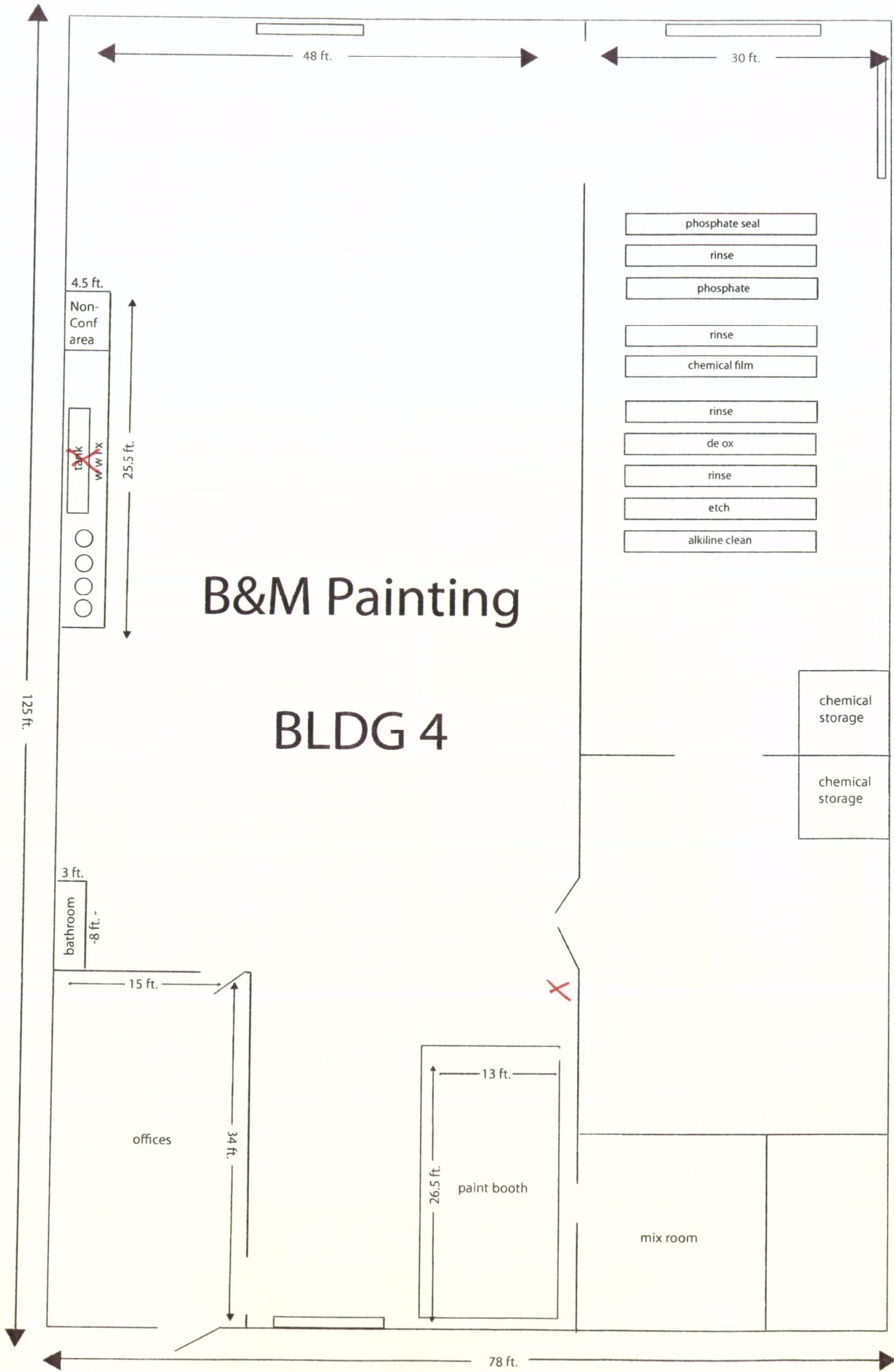


2	1	SHEET
-	-	REVISION

PACKING AND SHIPPING AREA - 3,897 SQ. FT.
 PROCESSING, PAINT SHOP, OFFICE,
 INSPECTION, AND QUALITY AREAS - 15,080 SQ. FT.

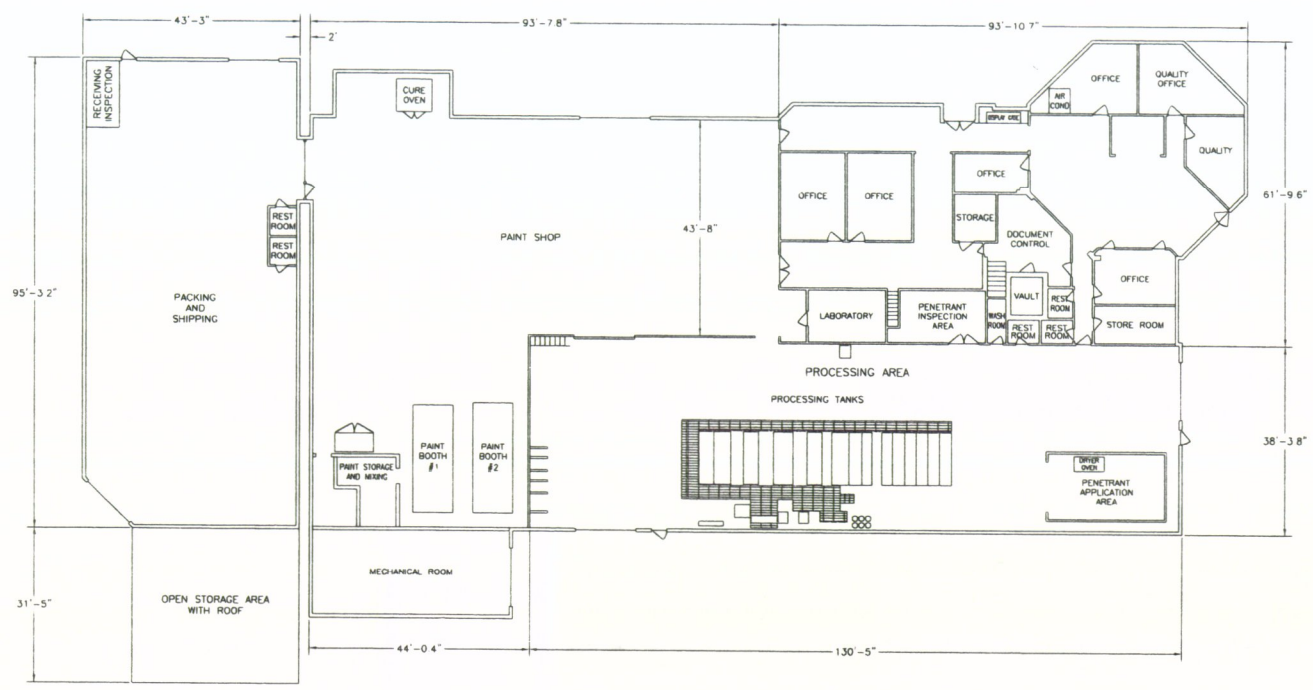


B & M PAINTING COMPANY CAMDEN, ARKANSAS			
B & M PAINTING FACILITY LAYOUT			
DESIGNED BY: MCH LEISER/PMC JUN 12, 2007	SIZE: FROM NO. D	DWG. NO.: BM-07-1001	REV: -
SCALE: NONE	SHEET: 1 OF 2		



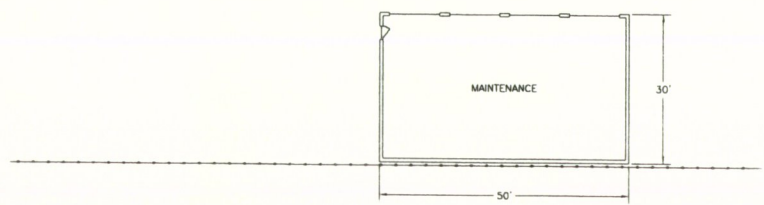
Location of all floor drains. There are 11 floor drains inside our facilities

Facility Drawing 4

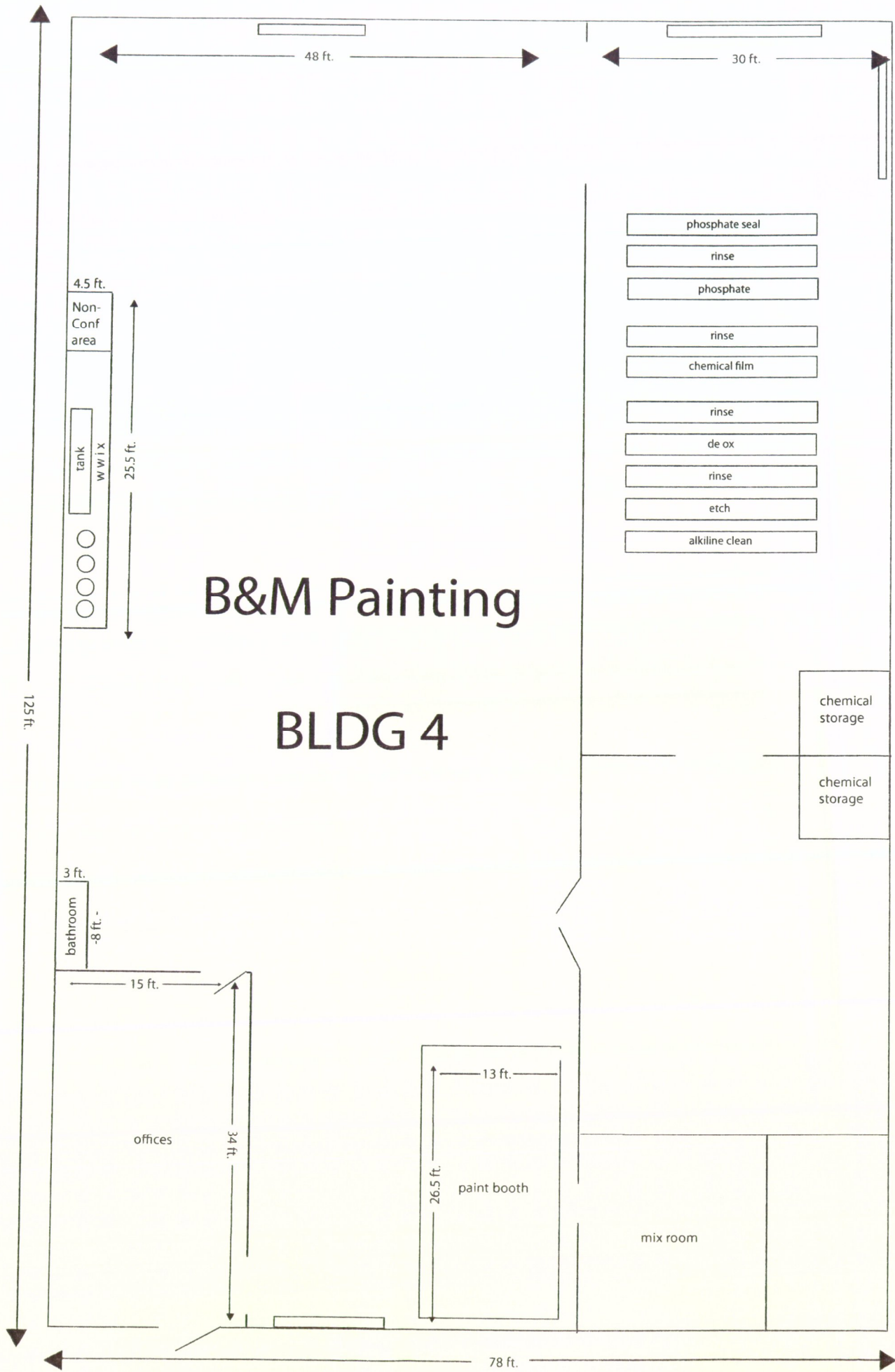


2	1	SHEET
-	-	REVISION

PACKING AND SHIPPING AREA - 3,897 SQ. FT.
 PROCESSING, PAINT SHOP, OFFICE, INSPECTION, AND QUALITY AREAS - 15,080 SQ. FT.



B & M PAINTING COMPANY CAMDEN, ARKANSAS			
B & M PAINTING FACILITY LAYOUT			
OWNER BY: KEH LEVENSBERG JAN 12, 2007	DATE FROM NO: D	DWG NO: BM-07-1001	REV: -
SCALE: NONE	SHEET: 1 OF 2		



B&M Painting

BLDG 4

125 ft.

48 ft.

30 ft.

4.5 ft.

Non-Conf area

tank
W W I X

25.5 ft.



phosphate seal

rinse

phosphate

rinse

chemical film

rinse

de ox

rinse

etch

alkiline clean

chemical storage

chemical storage

3 ft.

bathroom
-8 ft.-

15 ft.

offices

34 ft.

13 ft.

paint booth

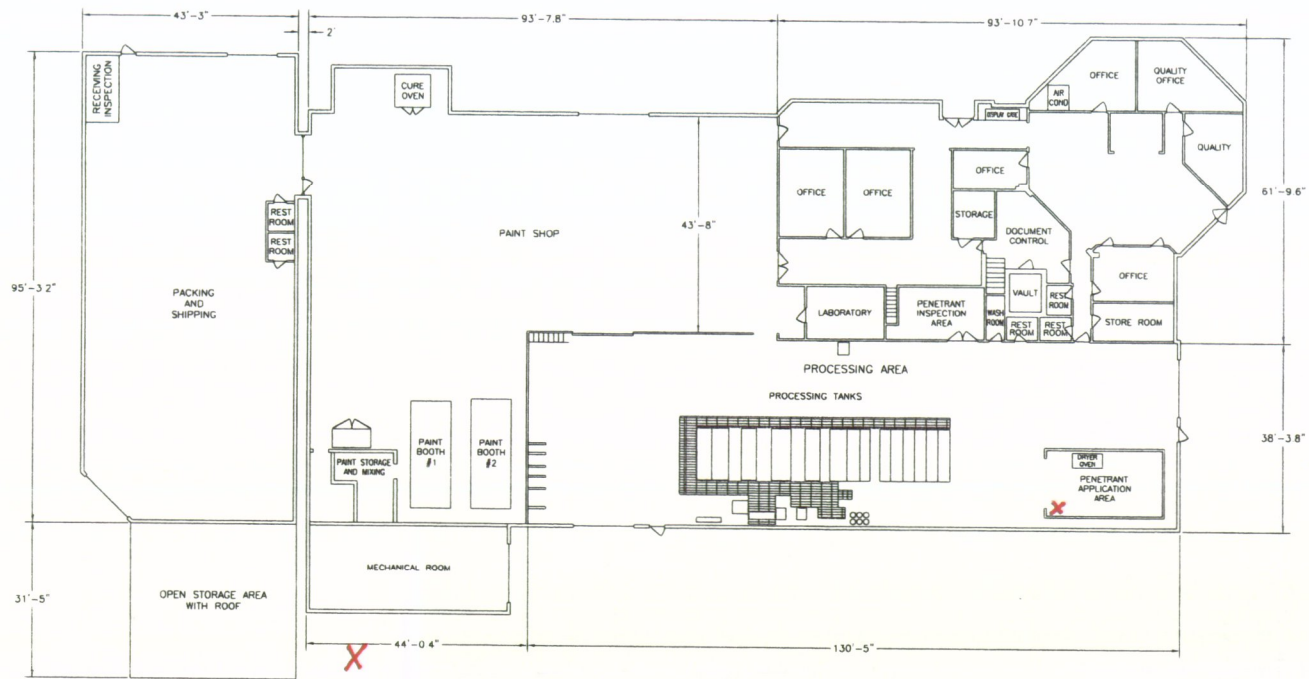
26.5 ft.

mix room

78 ft.

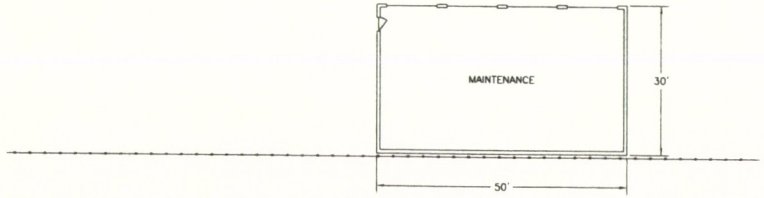
Location of all other drawings included with this set

Facility Drawing 5

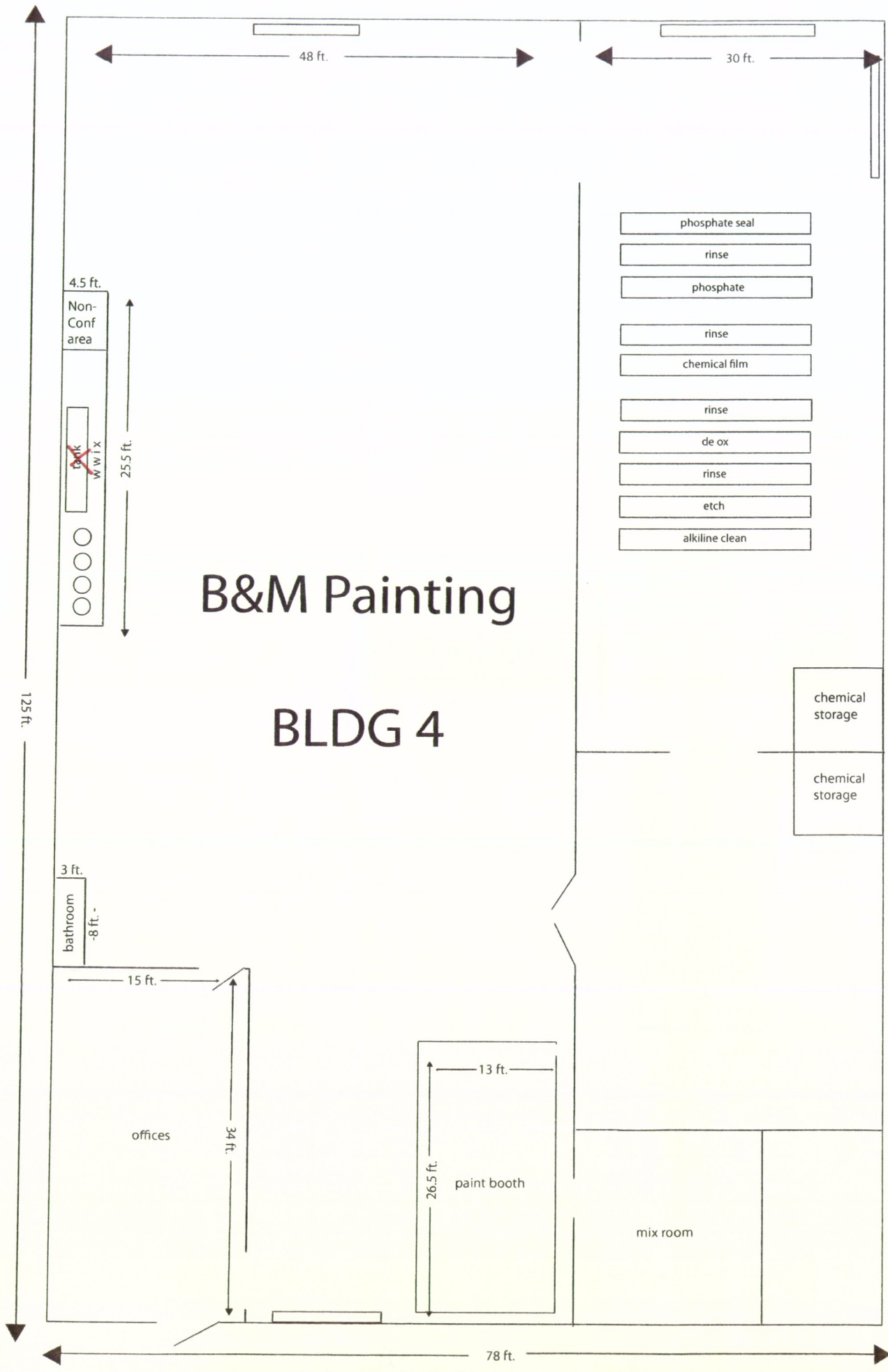


2	1	SHEET
-	-	REVISION

PACKING AND SHIPPING AREA - 3,897 SQ. FT.
 PROCESSING, PAINT SHOP, OFFICE,
 INSPECTION, AND QUALITY AREAS - 15,080 SQ. FT.



B & M PAINTING COMPANY CAMDEN, ARKANSAS			
B & M PAINTING FACILITY LAYOUT			
DRAWN BY: KEV LESORPIS JAN 12, 2007	TITLE: PFDW NO: D	DWG NO: BM-07-1001	REV: -
SCALE: NONE	SHEET: 1 OF 2		



B&M Painting

BLDG 4

125 ft.

48 ft.

30 ft.

4.5 ft.

Non-Conf area

25.5 ft.

~~W W I X~~

phosphate seal

rinse

phosphate

rinse

chemical film

rinse

de ox

rinse

etch

alkiline clean

chemical storage

chemical storage

3 ft.

bathroom
-8 ft.-

15 ft.

offices

34 ft.

13 ft.

paint booth

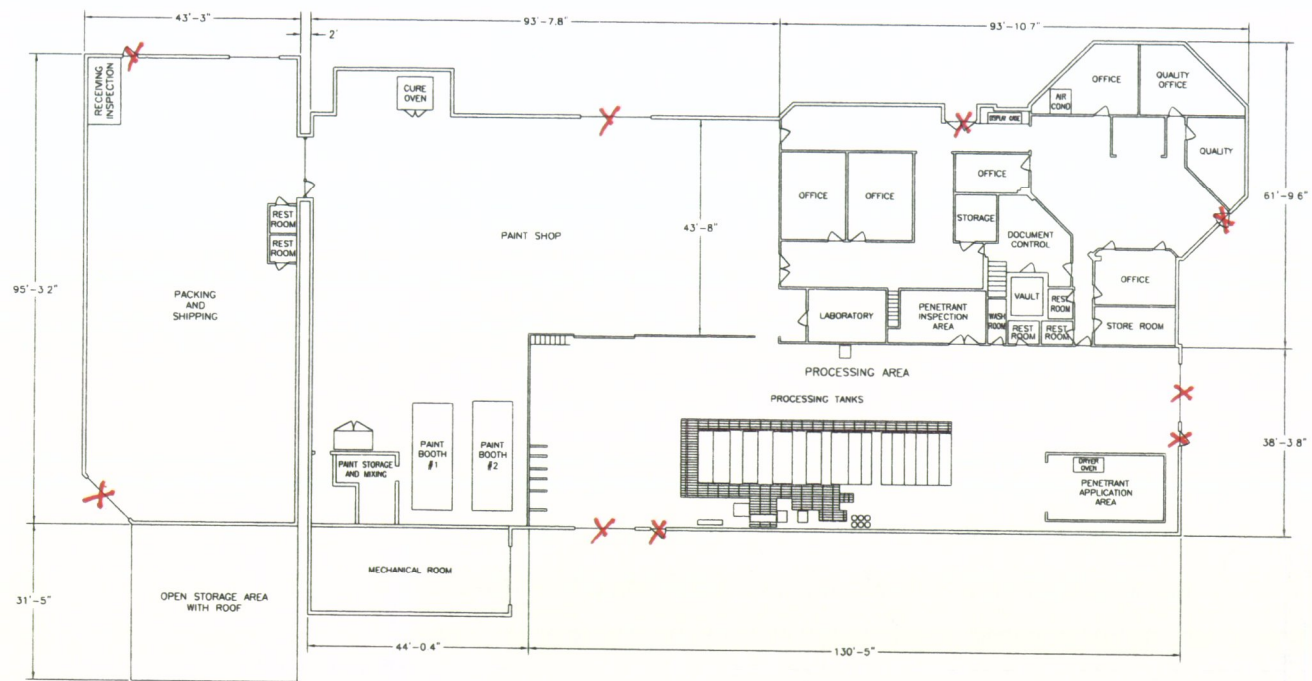
26.5 ft.

mix room

78 ft.

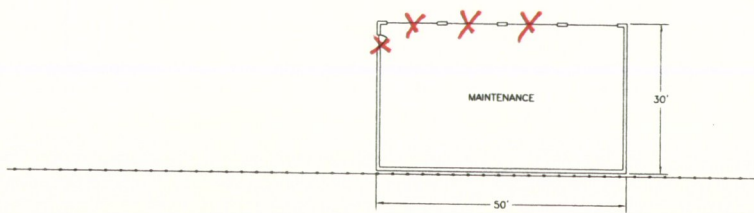
LOCATION OF ALL EXISTING CURBS, ELEVATIONS BY - 1.11 -

Facility Drawing 6

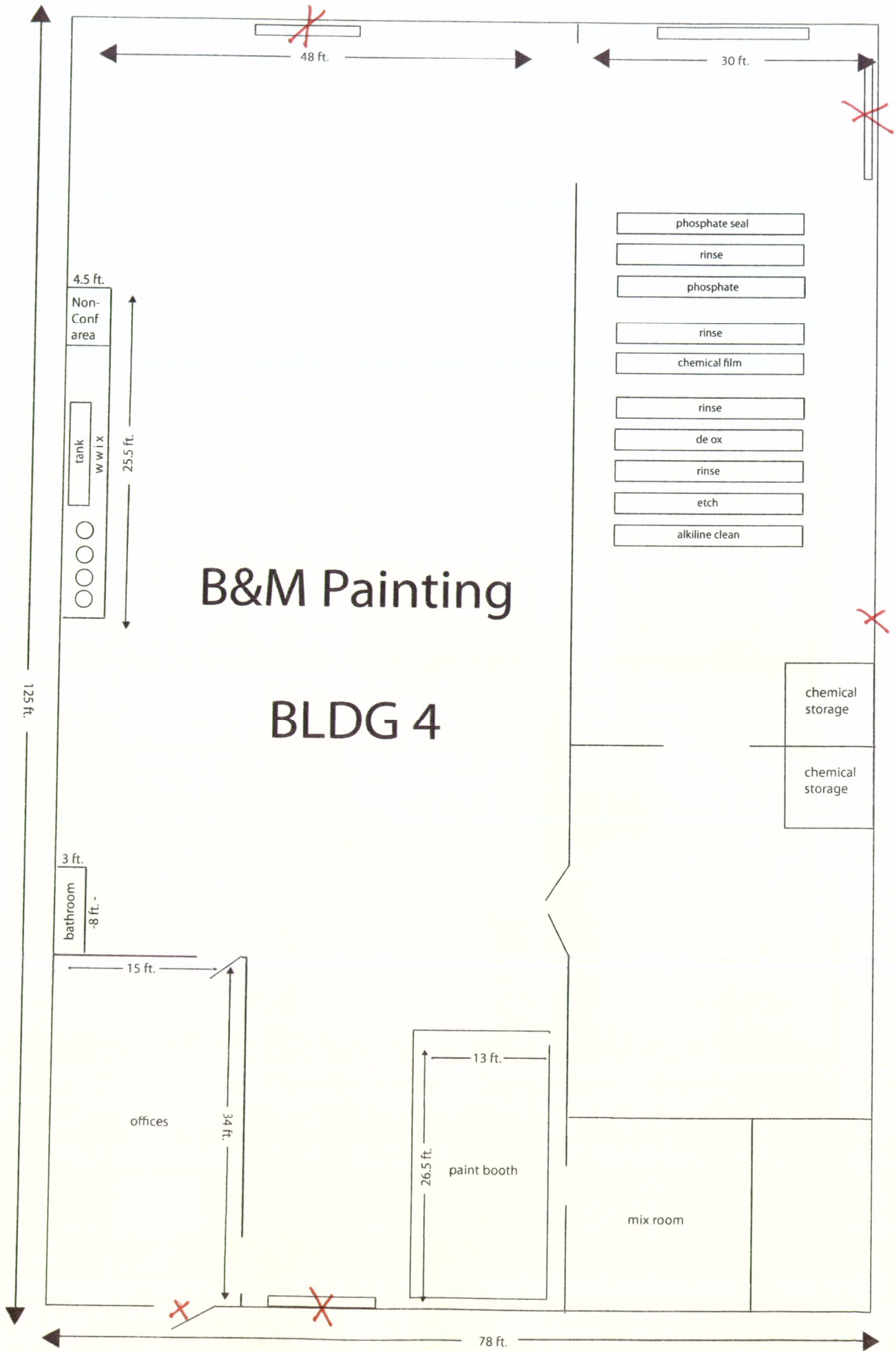


2	1	SHEET
-	-	REVISION

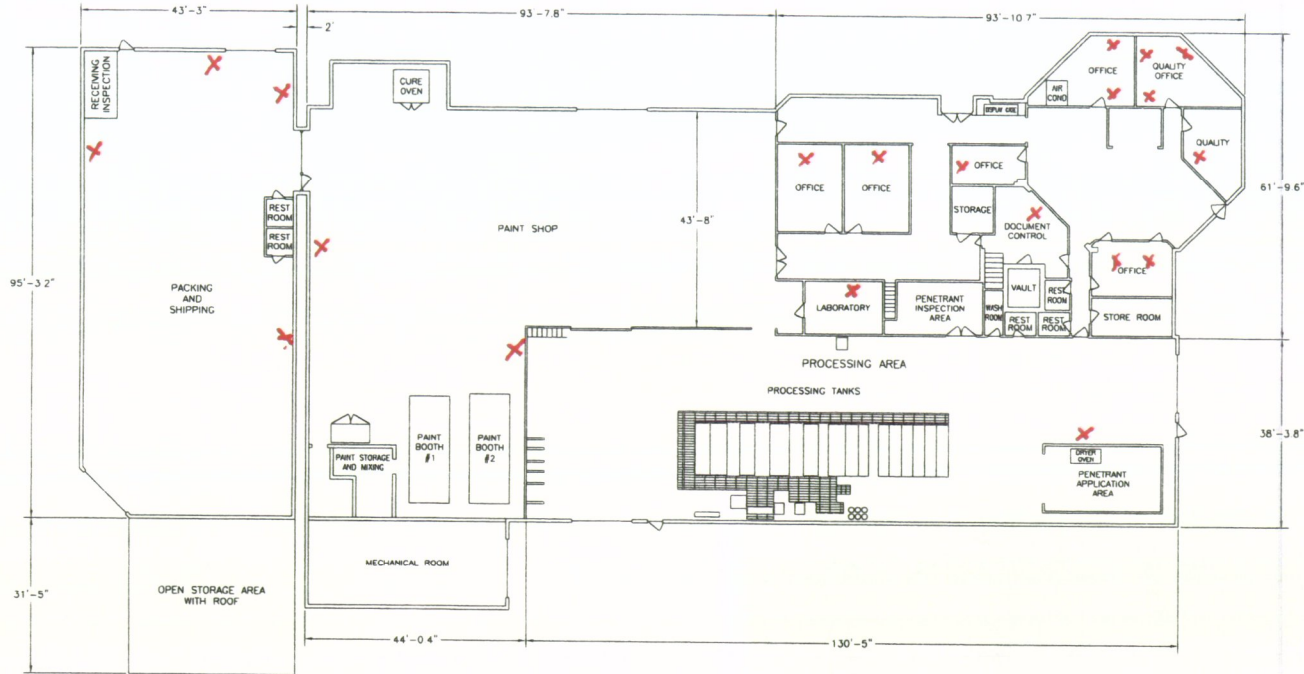
PACKING AND SHIPPING AREA - 3,897 SQ. FT.
 PROCESSING, PAINT SHOP, OFFICE,
 INSPECTION, AND QUALITY AREAS - 15,080 SQ. FT.



B & M PAINTING COMPANY CAMDEN, ARKANSAS			
B & M PAINTING FACILITY LAYOUT			
OWNER BY: KEV. LESBERG JAN 12, 2007	SCALE: NONE	DWG NO: BM-07-1001	REV: -
SCALE: NONE		SHEET: 1 OF 2	

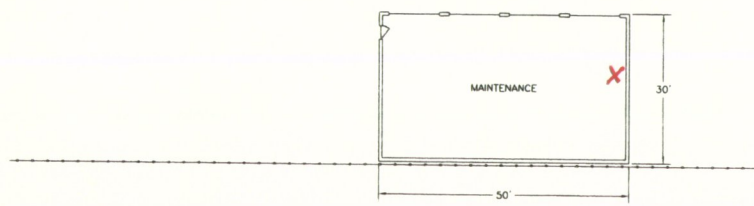


Facility Drawing 7

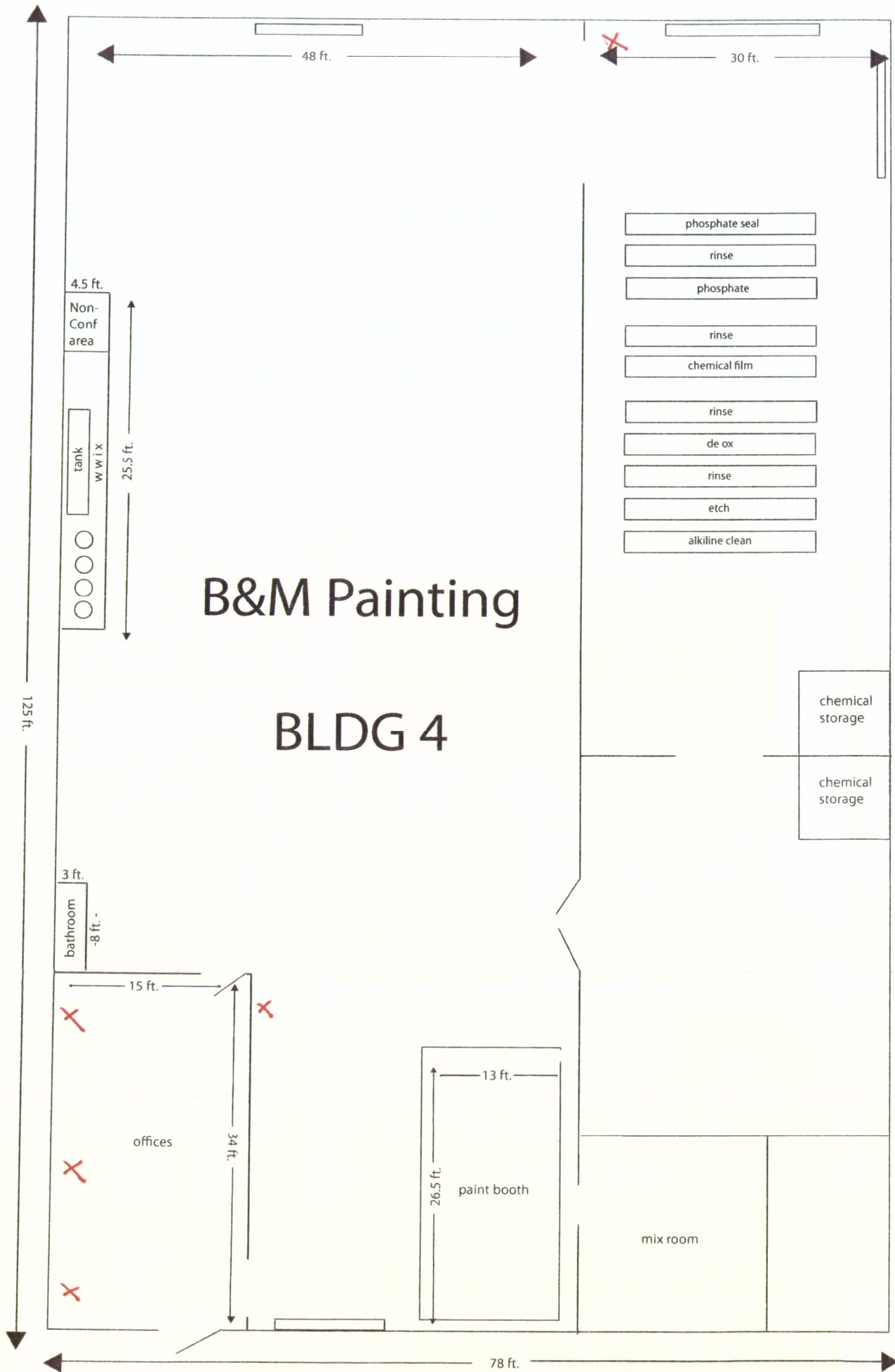


2	1	SHEET
-	-	REVISION

PACKING AND SHIPPING AREA - 3,897 SQ. FT.
 PROCESSING, PAINT SHOP, OFFICE,
 INSPECTION, AND QUALITY AREAS - 15,080 SQ. FT.

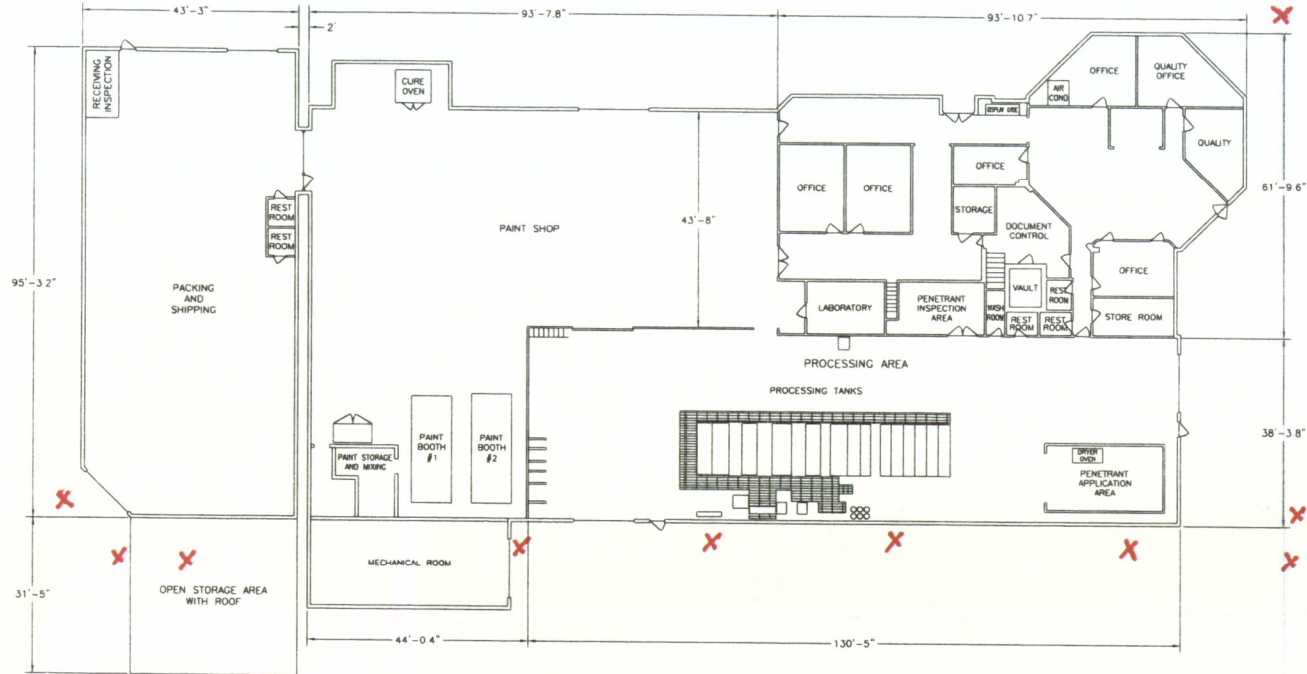


B & M PAINTING COMPANY CAMDEN, ARKANSAS			
B & M PAINTING FACILITY LAYOUT			
DRAWN BY: PDL-LEWIS@BMC JAN 12, 2007	DATE: PDL-12-07	DWG NO: BM-07-1001	REV: -
SCALE: NONE	SHEET: 1 OF 2		



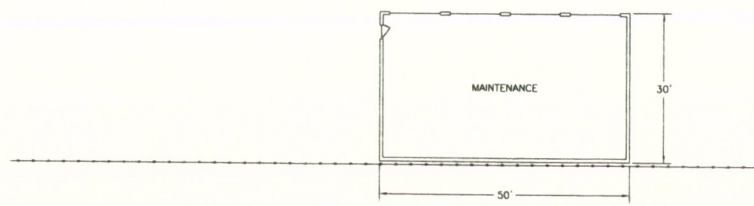
Location of all ... indicated by a red X

Facility Drawing 8

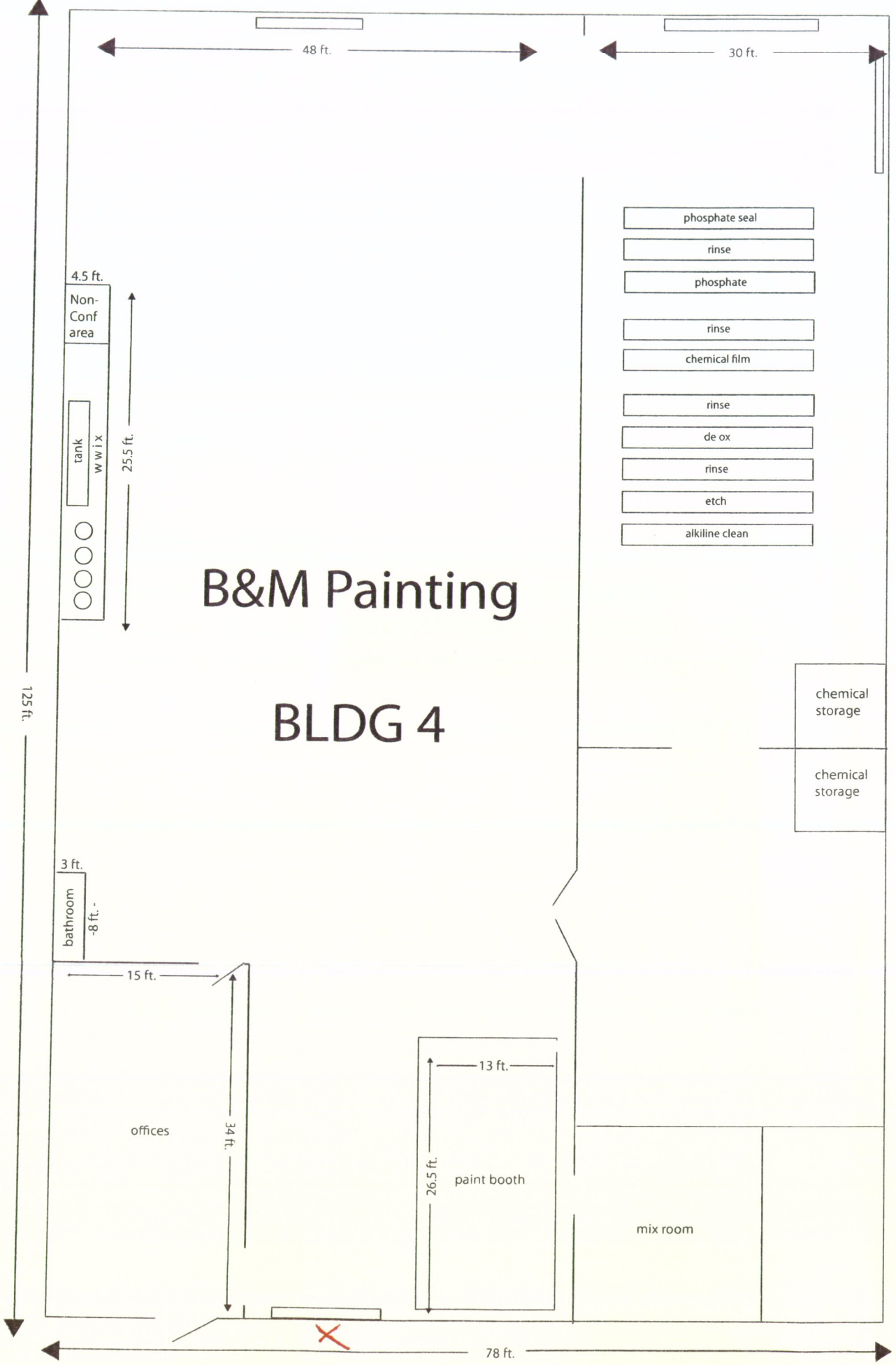


2	1	SHEET
-	-	REVISION

PACKING AND SHIPPING AREA - 3,897 SQ. FT.
 PROCESSING, PAINT SHOP, OFFICE, INSPECTION, AND QUALITY AREAS - 15,080 SQ. FT.



B & M PAINTING COMPANY CAMDEN, ARKANSAS			
B & M PAINTING FACILITY LAYOUT			
DRAWN BY: REN LESBOND JAN 12, 2007	SHEET FROM NO: D	DWG NO: BM-07-1001	REV: -
SCALE: NONE	SHEET 1 OF 2		



B&M Painting

BLDG 4

125 ft.

48 ft.

30 ft.

4.5 ft.
Non-Conf area

tank
WWTX

25.5 ft.

3 ft.
bathroom
-8 ft.-

15 ft.

offices

34 ft.

13 ft.
26.5 ft.
paint booth

phosphate seal

rinse

phosphate

rinse

chemical film

rinse

de ox

rinse

etch

alkiline clean

chemical storage

chemical storage

mix room

78 ft.



Description of Facilities and Chemical Uses

A. Process Description

B & M Painting Company chemically processes a wide array of military and aerospace industry parts (primarily aluminum) for furtherance of customers' manufacturing process, i.e., etched, passivated, anodized, chem. filmed, painted, etc. There are numerous chemical baths involved in this process including strong alkalis and acids.

B. Identification of Toxic Organic Chemicals

BMP has "no" TTO- listed chemicals in their waste streams discharged to POTW.

C. Inventory of Toxic Organics

None

D. Methods of Disposal

N/A

E. Leak and/or Accidental-Discharge of Toxic Organics Prevention Controls:

Any and all chemical solutions used at BMP (for either process or ancillary processes) are submitted for approval through Chemical Manager, Quality Manager, and/or EPA approved lab prior to being brought on BMP premises.

Outfalls (#1 and #2) for BMP are marked clearly with safety signs (POTW Outfall 1....and.....POTW Outfall 2) to ensure proper discharge management.

Additionally, all chemical storage and process areas have containment barriers that are from 9 to 20 inches in height and made of acid resistant composites.

As an additional engineering control, any and all overflows are directed through a coalescing weir and subsequently piped direct to POTW holding reservoir.....then, through WWIX and out to city sewer.

Finally, HAZMAT and WW stream management/handling training is provided to pertinent process and lab personnel.

Based on my inquiry of the person or persons directly responsible for managing compliance with the permit limitation (or pretreatment standard) for total toxic organics (TTO) I certify that, to the best of my knowledge and belief, no dumping of concentrated toxic organics into the wastewater has occurred since filing of the last discharge monitoring report. I further certify that this facility is implementing the toxic organic management plan submitted to the permitting authority.

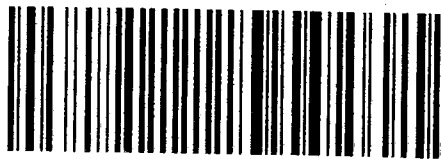
Name & Title of Representative: DAVID EZZELL / CHEMICAL MGR.

Signature of Representative: 

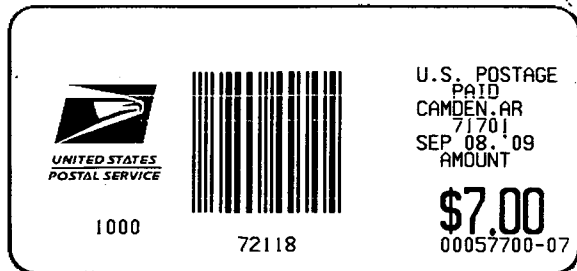
Date of Signature: 9-4-09

**B & M Painting Co., Inc.
Denver Ezell - Chem. Mgr.
347 Van Buren St.
Camden, AR 71701**

CERTIFIED MAIL™



7008 1300 0000 7949 8352



**RETURN RECEIPT
REQUESTED**

**ADEQ (Water Div.)
ATTN: Rufus Torrence
5301 Northshore Dr.
N. Little Rock, AR 72118**